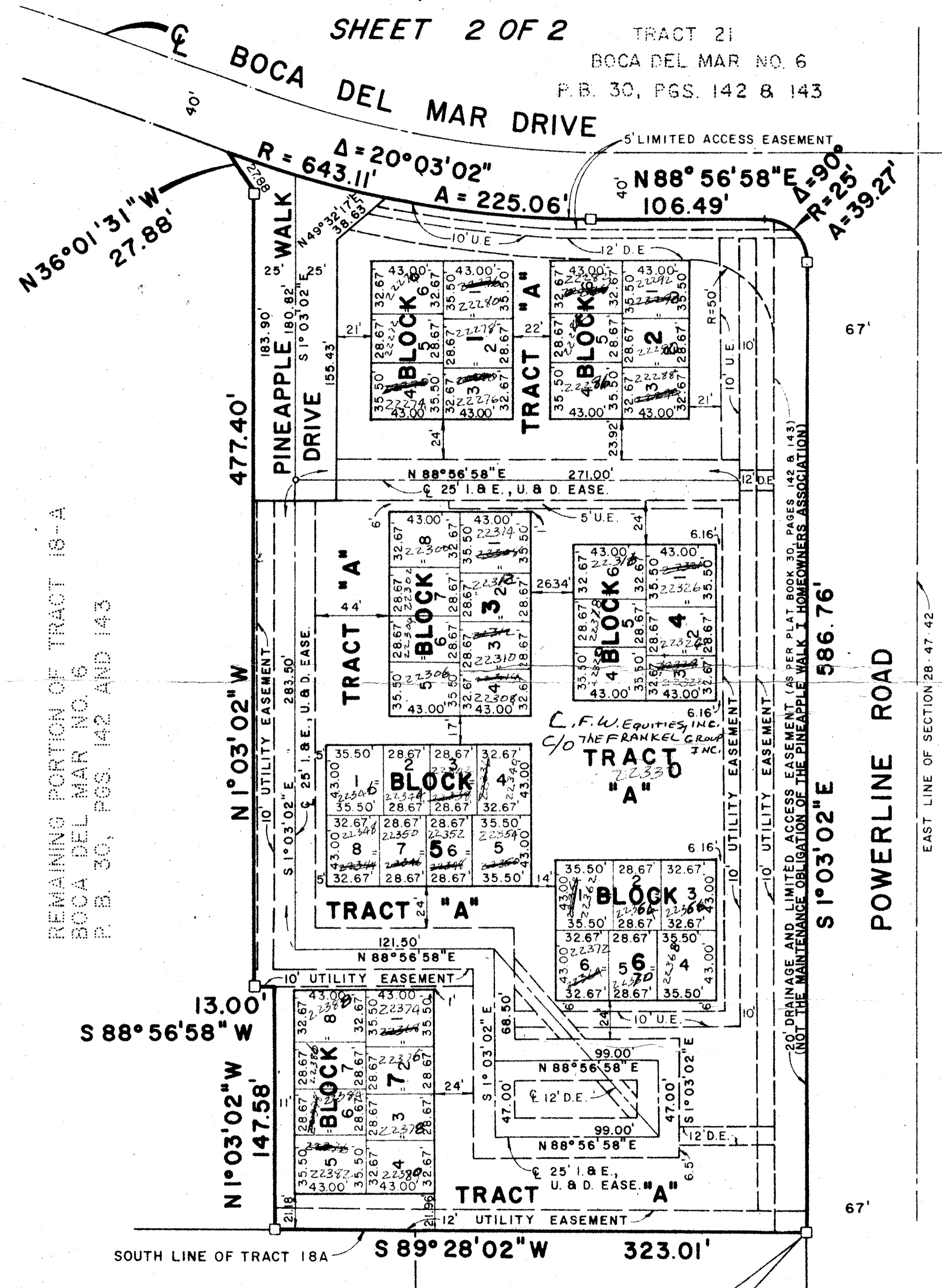


4719

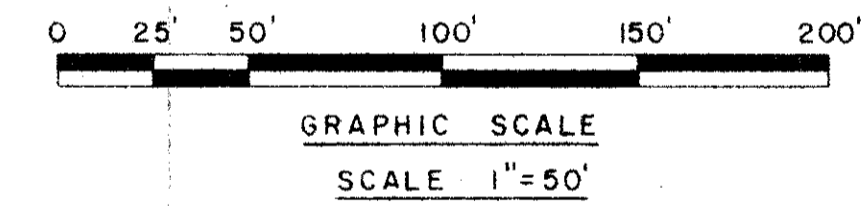
**PLAT NO. 1**  
**PINEAPPLE WALK**  
 BEING PART OF A P.U.D.  
 BEING A REPLAT OF A PORTION OF TRACT 18-A, BOCA DEL MAR NO. 6, AS  
 RECORDED IN PLAT BOOK 30, PAGES 142 AND 143, PUBLIC RECORDS OF  
 PALM BEACH COUNTY, FLORIDA  
 SECTION 28, TOWNSHIP 47 SOUTH, RANGE 42 EAST  
 JULY, 1983

SHEET 2 OF 2 TRACT 21  
 BOCA DEL MAR NO. 6  
 P.B. 30, PGS. 142 & 143

STATE OF FLORIDA  
 COUNTY OF PALM BEACH 55  
 This Plat was filed for record at  
 \_\_\_ M. this \_\_\_ day of \_\_\_ 19\_\_\_  
 and duly recorded in Plat Book No. \_\_\_  
 on Page \_\_\_  
 John B. Dunkle, Clerk Circuit Court  
 By \_\_\_\_\_ D.C.



VILLAS DEL MAR  
 UNIT 1  
 P.B. 34, PGS. 118 & 119



BOCA DEL MAR NO. 3  
 P.B. 30, PGS. 82 - 84

SUBDIVISION #	
BOOK	PAGE
FLOOD ZONE	FLOOD MAP # 248
QUAD #	ZONING
SE	ZIP CODE 33406
CUD-NAME	

- NOTES
- NO BUILDINGS OR ANY KIND OF CONSTRUCTION SHALL BE PLACED ON UTILITY OR DRAINAGE EASEMENTS.
  - NO STRUCTURES, TREES OR SHRUBS SHALL BE PLACED ON DRAINAGE EASEMENTS.
  - APPROVAL OF LANDSCAPING ON UTILITY EASEMENTS OTHER THAN WATER OR SEWER SHALL BE ONLY WITH APPROVAL OF ALL UTILITIES OCCUPYING SAME.
  - U.E. DENOTES UTILITY EASEMENT.  
D.E. DENOTES DRAINAGE EASEMENT.  
I. & E., U. & D.E. DENOTES INGRESS AND EGRESS, UTILITY AND DRAINAGE EASEMENT.
  - PERMANENT REFERENCE MONUMENTS ARE SHOWN THIS: □  
PERMANENT CONTROL POINTS ARE SHOWN THIS: ○
  - EASEMENTS ARE FOR PUBLIC UTILITIES, UNLESS OTHERWISE NOTED.
  - BEARINGS AS SHOWN HEREON ARE IN THE MERIDIAN OF THE PLAT OF BOCA DEL MAR NO. 6, AS RECORDED IN PLAT BOOK 30, PAGES 142 AND 143, PUBLIC RECORDS, PALM BEACH COUNTY, FLORIDA.
  - IN INSTANCES WHERE DRAINAGE AND UTILITY EASEMENTS INTERSECT, THE AREAS WITHIN THE INTERSECTION ARE DRAINAGE AND UTILITY EASEMENTS. CONSTRUCTION AND MAINTENANCE OF UTILITY FACILITIES SHALL NOT INTERFERE WITH THE DRAINAGE FACILITIES WITHIN THESE AREAS.

REMAINING PORTION OF TRACT 18-A  
 BOCA DEL MAR NO. 6  
 P.B. 30, PGS. 142 AND 143

CAMINO REAL CENTRE  
 P.B. 33, PGS. 51 AND 52

NOT PLATTED

P.O.B.  
 S.E. COR. TRACT 18A  
 BOCA DEL MAR PLAT NO. 6

EWING AND SHIRLEY, INC.  
 land surveyors and planners

0205-327  
 47/9

THIS INSTRUMENT WAS PREPARED BY:  
 KENT W. EWING, JR. IN THE OFFICE OF  
 EWING AND SHIRLEY, INC.  
 3707 LAKE WORTH ROAD, SUITE 118  
 LAKE WORTH, FLORIDA 33461

**MB SA**  
 MICHAEL B. CHORAH & ASSOCIATES, INC.  
 ENGINEERS PLANNERS DEVELOPMENT CONSULTANTS  
 1897 REST HILL BLVD.  
 SUITE 205  
 WEST PALM BEACH, FLORIDA 33406  
 PHONE: (305) 968-0060